

# IndiOx™

## Indium Oxide

Indium oxide ( $\text{In}_2\text{O}_3$ ) is a yellow powder. When combined with tin oxide as a dopant, it forms ITO, a transparent and conductive film used for flat panel displays and touch sensors.



### **IndiOx™ Type A—Crystalline**

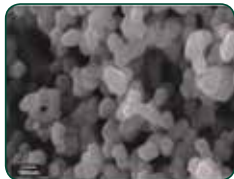
Particle size (D50) from 10-20 micron

### **IndiOx™ Type B—Fine**

Fine powder with D50 from 1.5-3.5 micron

### **IndiOx™ Type T—Target Grade**

Particle morphology is tailored for high-performance sintered ITO targets with low impurities. It has a primary particle size of ~100nm.



# IndiOx™

## Indium Oxide

Attribute	Type A Crystalline	Type B Fine	Type T Target Grade
BET (m <sup>2</sup> /g)	0.4	10–18	8–12
D10 (µm)	0.8–9	0.5–1.3	0.1–0.4
D50 (µm)	8–20	1–3	0.3–1.2
D90 (µm)	22–36	3–6	0.4–8
Typical impurities	Fe<5ppm Pb<5ppm Si<10ppm	Fe<5ppm Pb<5ppm Si<30ppm	Fe<5ppm Pb<5ppm Si<10ppm

*This pocket card is for general information only.*

Contact our engineers: [askus@indium.com](mailto:askus@indium.com)  
Learn more: [www.indium.com](http://www.indium.com)



Form No. 99681 R0  
©2019 Indium Corporation

